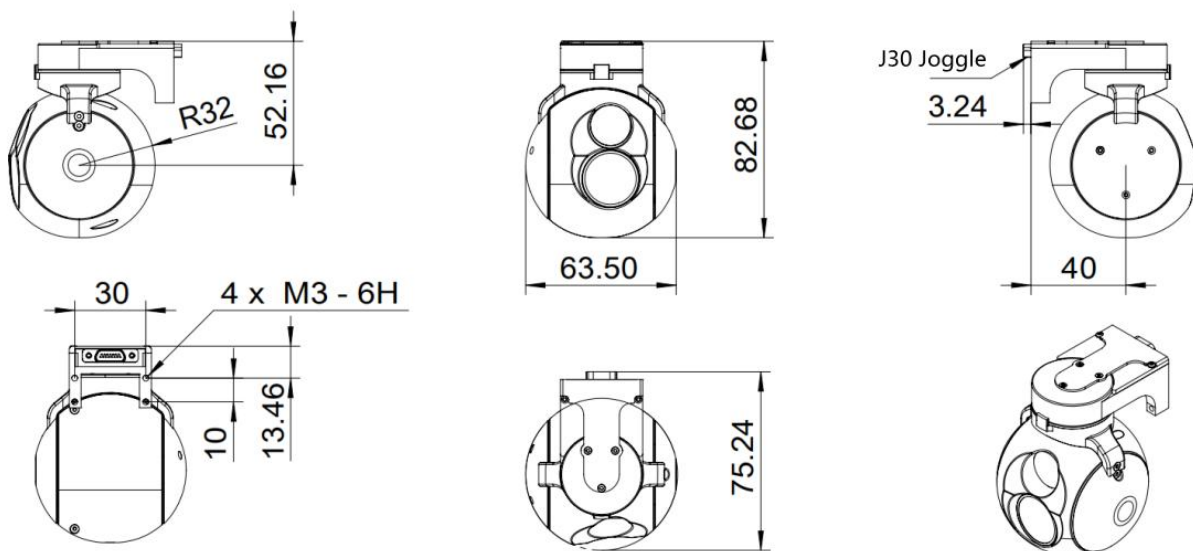


Product highlights:

1. 8mm prime lens EO+ 18mm prime lens IR
2. Tracking function
3. 12~28V power input
4. Ethernet video output
5. Small size, low power consumption

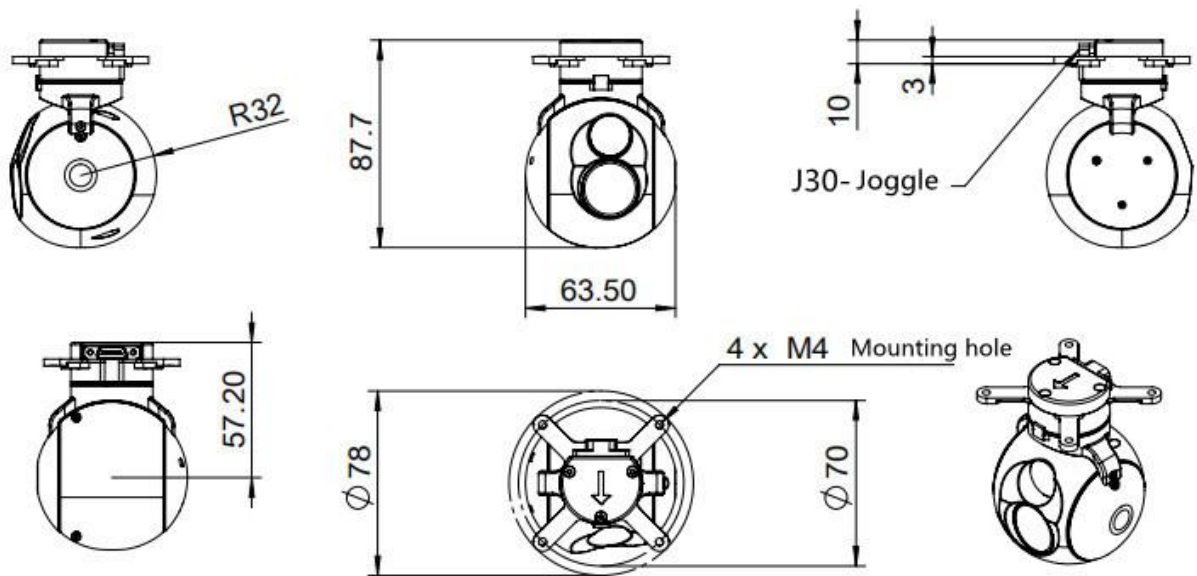
Dimensions



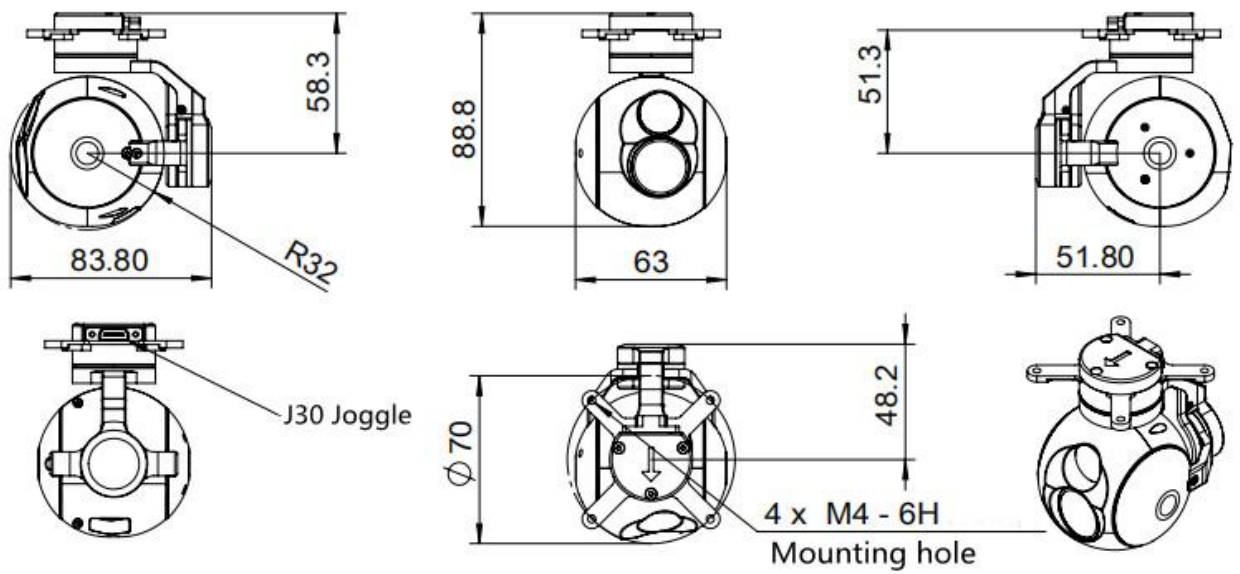
SIV-01

Parameters

MODEL		SIV-01	SIV-02	SIV-03
System specification	System type	Gyro stability		
	Weight	280g		330g
Stable system	Platform type	Two axle		Tri axis
	Azimuth	-110° ~+110°		N×360°
	pitch	-100° ~+40°		
	Maximum search angular velocity	≥100° /s		
	Stability accuracy	0.1mrad(1° /2HZ)		
	Angular position accuracy	≤0.3°		
Visible light camera	Resolution and frame rate	1920×1080 @60fps		
	FOV	38.3° ×22.1° (8mm)		
Infrared camera	Resolution and frame rate	640×480@60fps		
	SMALL FOV	24° ×18° (18mm prime lens)		
Tracking module	Frame rate	60Hz		
	Tracking speed	±48 Pixel/frame		
System external interface	Control	RS232		
	Video output	NET		
Power supply	Power	12~28V		
	Power consumption	Av≤10W, Max≤20W		
Environmental conditions	Operating temperature	-40°C ~+60°C		
	Storage temperature	-50°C ~+70°C		
	shock resistance	≥400g		



SIV-02



SIV-03